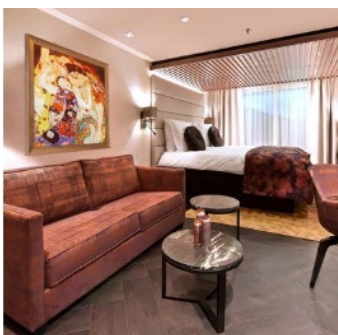


Royal Family 2019



THE NEW AMAMAGNA : OCT. 6-13, 2019

Hosted by Mark and Mimi Comfort, Owners of Cruise Holidays

There's a new destination on the Danube—the extraordinary AmaMagna. An evolution of AmaWaterways' already exceptional fleet of river cruise ships, AmaMagna embodies the invariable world-class service, 5-star dining, high-quality amenities and authentic experiences our past guests hold dear—but now there's even more to love. At almost twice the width of traditional European river cruise ships, AmaMagna invites you to luxuriate within both sprawling spaces and intimate pockets that offer moments of repose so invigorating you may never want to leave!

DAY 1: VILSHOFEN, GERMANY

DAY 2: VILSHOFEN -PASSAU

DAY 3: LINZ, AUSTRIA

DAY 4: WEISSENKIRCHEN

DAY 5: VIENNA

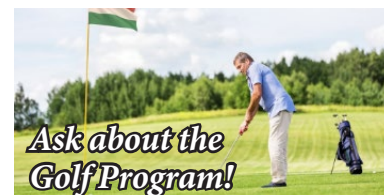
DAY 6: BRATISLAVA, SLOVAKIA

DAY 7: BUDAPEST, HUNGARY

DAY 8: BUDAPEST

Upper Wall Window from \$4,099pp
Outside Balcony from \$5,099pp
Suite from \$6,029pp

\$900pp deposit due at booking. Final payment due 6/17/2019. Prices are per person, based on double occupancy, and subject to change. Pricing reflects a cash or check payment discount. Airfare, insurance, and transfers are additional



***Ask about the
Golf Program!***

CONTACT CRUISE HOLIDAYS
816-741-7417 recep@chkc.travel

Romantic Danube



DAY 1 VILSHOFEN : EMBARKATION

Exclusive Oktoberfest! Embark your cruise in Vilshofen. This evening meet your fellow passengers on board. (D)

DAY 2 VILSHOFEN: Free Time

PASSAU : Explore Vilshofen's beautiful old town before cruising to Passau, known as the "City of Three Rivers." Join a walking tour or if you prefer to be more active, hike high into the hills for a visit to the "Veste Oberhaus," Passau's Castle Hill. (B,L,D)

DAY 3 LINZ : The ship arrives in Linz where you'll have several choices of excursions. Opt for a full-day excursion to Salzburg where you'll tour the historic center, Mirabell Gardens, Residenz Square and the Old Market. En route to Salzburg, stop at Mondsee, home of the famed Basilica St. Michael and site of the wedding scene in The Sound of Music. Alternatively, you can join a morning walking tour through Linz's old city center and by the Mozart House; or go on a guided bike tour along the city's famed "Culture Mile" and the Danube. During the afternoon, you have three more choices of excursions. Choose a half-day in Salzburg or take a scenic drive through the beautiful Austrian Lake District with a stop in St. Wolfgang. You can also choose to visit the charming mountain town, Český Krumlov, located just over the Czech-Austrian border. (B,L,D)

DAY 4 WEISSENKIRCHEN: Cruise through the Strudengau and Wachau valleys to Weissenkirchen, gateway to Dürnstein. Once here, you can choose to join a walking tour in Dürnstein along its cobblestone streets to the Baroque Stiftskirche, and then visit Melk's magnificent Benedictine Abbey. For the more active adventurer, you can opt to hike up to the fortress where Richard the Lionheart was once held, or take a bike ride along the Danube. As an alternative excursion, visit a local apricot grower, where you'll enjoy the region's finest apricot treats. Later in the evening, enjoy a special wine tasting of locally grown, world-renowned Riesling and Grüner Veltliner in Weissenkirchen. (B,L,D)

DAY 5 VIENNA: The "City of Waltzes" offers a treasure trove of gems and your city tour showcases them, including the majestic Opera House and the former Imperial Palace. Your tour concludes in the historic city center with a visit to St. Stephen's Cathedral. Or if you prefer a more active tour, take a guided bike ride to the Klosterneuburg Monastery. During the afternoon, enjoy leisure time to further explore this iconic city. (B,L,D)

DAY 6 BRATISLAVA: Host to the crowning ceremonies of 11 Hungarian kings and queens between 1536 and 1830, Bratislava certainly has earned the title "Coronation City of Kings," as you'll discover during your walking tour. Or join a special "Tastes of Slovakia" tour. For a more active adventure, hike up to Bratislava Castle, offering magnificent views of the city. (B,L,D))

*Please Note: Wine Cruise itineraries are modified and will not visit Bratislava. Instead of visiting Bratislava, guests will enjoy visiting the charming winemaking town of Gobelsberg.

DAY 7 BUDAPEST: Your city tour begins at Budapest's Great Market Hall, where you'll discover plenty of delicious food and shopping. Afterwards, you'll visit both the Buda (hilly) and Pest (flat) sides of the Danube River. You'll see the 19th-century Chain Bridge, which connects the Buda district with Pest; and the UNESCO-designated Castle Hill district, which contains some of Budapest's most important medieval monuments and museums. As an alternative choice, you can hike up to Castle Hill for breathtaking views of the city below. Spend your last evening on board cruising past the famed Parliament Building as the city turns on all her dazzling lights. (B,L,D)

DAY 8 BUDAPEST: DISEMBARKATION

Disembark the ship as you prepare for your flight home. (B)

AMAMAGNA



Note: Elevator reaches Violin Deck, Cello Deck and Piano Deck; pop-up lift available for Sun Deck access

Ample Space for Private Group Events:

- ◆ Jimmy's Wine Bar Restaurant
 - Accommodates up to 65 guests
- ◆ The Chef's Table Restaurant
 - Accommodates up to 36 guests

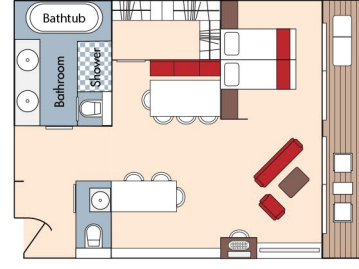
Ask for details on reserving private group events

Technical Data:

- ◆ Year built: 2019
- ◆ Length: 443 ft.
- ◆ Width: 72 ft.
- ◆ Registry: Switzerland
- ◆ Staterooms: 98
- ◆ Passengers: 196
- ◆ Crew: 70

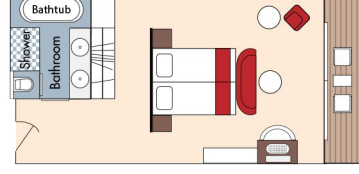


Category Owners Suite (OS)

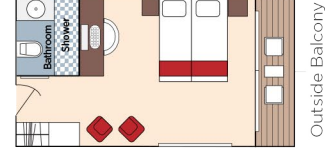


- Violin Deck Outside Balcony - 710 sq. ft.
- Violin Deck Outside Balcony - 474 sq. ft.
- Violin Deck Outside Balcony - 355 sq. ft.
- Cello Deck Outside Balcony - 355 sq. ft.
- Violin Deck Outside Balcony - 252 sq. ft.
- Cello Deck Outside Balcony - 252 sq. ft.
- Piano Deck Fixed Windows - 205 sq. ft.
- Piano Deck Fixed Windows - 205 sq. ft.

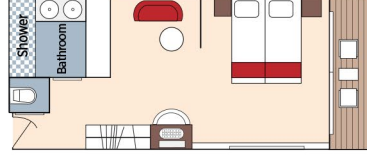
Category Grand Suite (GS)



Category AA / AB



Category Suite (SA/SB)



Category D / E



..... Staterooms separated by a dotted line can become connected upon request
▲ Up to triple and quad occupancy

