

Enchanting Rhine 2018



AMAWATERWAYS • AMASTELLA • JUNE 11-18, 2018

Grand cities blend in perfect harmony with their historic past and progressive future in Cologne and Amsterdam. Inspirational towns have given way to great stories, such as Heidelberg, where Mark Twain wrote “A Tramp Abroad.” Timeless traditions still remain intact—from the making of Cologne’s Kölsch beer to the making of Rudesheimer Coffee. Take a front-row seat on this enchanting journey along the Rhine to magnificent cities and charming villages alike.

OPTIONAL - 2 NIGHT PRE-PACKAGE

FRI. JUN 08, 2018 DEPART USA (airfare additional)

SAT. JUN 09: TRANSFER FROM ZURICH TO LUCERNE

Transfer from the airport to Lucerne hotel. Check-in and lunch on own. Guide meets group in the hotel lobby and provides an afternoon walking tour of Lucerne.

4 Star Hotel Standard Room such as Monopole or similar, Lucerne, Switzerland. (B)

SUN. JUN 10: LUCERNE

Breakfast included. Private Coach - arrives at hotel and provides transfer for the cable car base station. Guide meets group in the hotel lobby and provides a full-day Mt Pilatus tour.

Admission: Mount Pilatus Golden Round Trip Tour - 1st class via Aerial Gondola, Cogwheel train and Cruise. Walk back to hotel on own after boat docks in the center of town.

4 Star Hotel Standard Room such as Monopole or similar, Lucerne, Switzerland. (B)

MON. JUN 11: LUCERNE TO BASEL :

Transfer from Lucerne hotel to the Basel cruise pier. (B)

MON. JUNE 11: EMBARK: All guests Embark onboard the AmaStella, Basel, Switzerland. (L,D)

TUE. JUNE 12: BREISACH, GERMANY

Step back in time with a visit to the enchanting Alsatian town of Riquewihr, which looks almost the same as it did in the 16th century. On your walking tour, admire historic architecture as well as famous sights, such as the Dolder Gate. Alternatively, you may wish to go to Freiburg, founded in 1120 and home to the Freiburg's Münster, a Gothic cathedral said to have "the most beautiful spire on earth." (B,L,D)

WED. JUNE 13: STRASBOURG, FRANCE

One of the most enchanting cities in Europe and home to the UNESCO World Heritage Site, The Grand Île, Strasbourg will captivate you. Discover its many treasures with a panoramic tour past the stunning Parc de l'Orangerie, the European Parliament and the Place de la République. You'll then walk through its iconic "La Petite France" district, which appears to have been lifted straight from the pages of a fairytale. Prefer to enjoy the city more actively, then join a guided bike tour, which also takes you through the Parc de l'Orangerie. (B,L,D)

THU. JUNE 14: MANNHEIM, GERMANY – RÜDESHEIM

You'll have a choice of three excursions. Visit Heidelberg, the perfectly preserved medieval city nestled in the Neckar River Valley along Germany's Castle Road. Discover the iconic red sandstone Heidelberg Castle and Great Vat, an 18th-century 49,000-gallon wine cask. For a more active adventure while in Heidelberg, join a guided hike up the Philosopher's Path and be rewarded with panoramic views of the city. Alternatively, you can visit one of Germany's oldest cities, Speyer, known for the largest Romanesque cathedral in Europe—a UNESCO World Heritage Site—and the medieval Altpörtel, Old Gate. Later in

the day, set sail to Rüdesheim, where you'll have the opportunity to visit Siegfried's Mechanical Musical Instrument Museum or enjoy a tasting of Rüdesheimer coffee, ceremoniously made with brandy. (B,L,D)

FRI. JUNE 15: RÜDESHEIM – RHINE GORGE – KOBLENZ

Spend the morning in Rüdesheim and enjoy a tasting of Riesling wines after a lovely gondola ride soaring high above the vineyards en route to the Niederwalddenkmal Statue. Alternatively, opt for a hike that takes you through the vineyards to Ehrenfels Castle, where you can enjoy stunning views of the Rhine. A third choice is cycling along the Rhine and through this scenic town. Later in the day, the ship sails through the enchanting UNESCO-designated Rhine Gorge, the most stunningly beautiful stretch of the river before reaching Koblenz, where you will enjoy a guided walk through the lovely Old Town. (B,L,D)

SAT. JUNE 16: KOBLENZ – COLOGNE

Home to one of Germany's most revered Gothic masterpieces, the Cologne Cathedral, this 2,000 year-old city is also a bustling cosmopolitan hotspot. Join a guided tour through the enchanting Old Town and explore the UNESCO-designated cathedral, where the remains of the fabled Three Kings—the Magi—are believed to rest. Alternatively, ride a bike along the Rhine and through the historic Stadtgarten. Or visit a local tavern to taste Kölsch beer and Reibekuchen—potato pancakes served with apple sauce. (B,L,D)

SUN. JUNE 17: AMSTERDAM, THE NETHERLANDS

Eclectic Amsterdam boasts amazing history, art, architecture, and museums, and you have three choices as to how you wish to explore it. The famous canals of Amsterdam await discovery on your city tour beginning with a scenic canal cruise followed by a walk to Begijnhof, known for its Middle Age buildings. For a different view of the city, you can join the Jordaan District walking tour or the Jewish Heritage tour. The Jordaan District tour begins at the Westerchurch and takes you past the Noordermarkt, the Karthuizerhof and the "9 streets"; afterwards, you'll stop in a local café for a hot beverage and Dutch apple pie. The Jewish Heritage tour begins with a visit to the 17th-century Portuguese Synagogue and the Jewish Historical Museum chronicling the history of the Jews in Amsterdam. (B,L,D)

MON. JUNE 18: AMSTERDAM – DISEMBARKATION

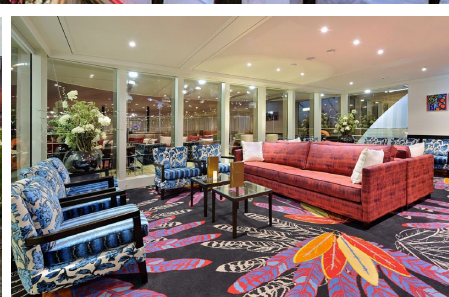
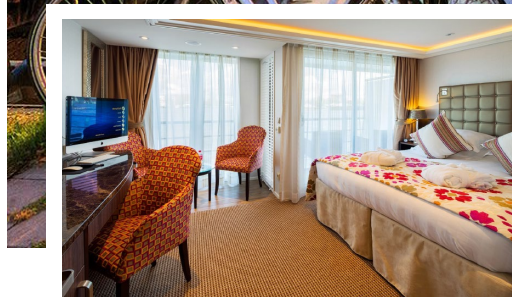
Bid Farewell to Amsterdam, transfer to the airport for your homeward flight. (B)

TO BOOK CALL CRUISE HOLIDAYS

816-741-7417 • recep@chkc.travel



AmaStella



The AmaStella, new in 2016 features the most advanced design of any river cruise vessel currently in operation. Our exclusive Twin Balconies are available in most staterooms, which measure a spacious 210-235 sq. feet, with four suites measuring 350 sq. feet. Passengers will enjoy gourmet dining with free-flowing fine wines at multiple onboard dining venues; a heated sun deck swimming pool with a 'swim-up' bar; fitness center and spa; complimentary ship-wide Wi-Fi and in-room Internet and entertainment on demand; and a fleet of bicycles carried onboard for passengers to enjoy on their own or on guided bike tours.

We realize that our guests have different tastes, so we've developed a menu of shore excursions in every port of call. In many destinations, you'll be free to choose from one of several options — all of which are included in your cruise fare. There's always a city tour designed to show you all the renowned highlights and landmarks in grand capitals and charming villages alike. Opt for an unforgettable exploration of the major sights led by a local, English-speaking guide that is well-versed in history and culture. We also offer different tour paces: Gentle, regular and active. The choice is yours.

FROM \$3,299*

Category D: Upper wall window

- BONUS -

EXCLUSIVE WOW SURPRISE!

Category C - French Balcony , Cello and Violin Deck

from \$3,699* pp

Category BB - French & Outside Balcony, Cello Deck

from \$4,139* pp

Category BA - Larger French & Outside Balcony, Violin Deck

from \$4,199* pp

Category AA - Largest Room : French & Outside Balcony, Violin Deck

from \$4,699* pp

OPTIONAL 2 NT LUCERNE PRE-CRUISE PACKAGE : FROM \$1,399PP

THIS EXCLUSIVE CHARTER PRICE IS ONLY AVAILABLE AT CRUISE HOLIDAYS!

**Prices include: River cruise accommodations, port taxes, cruise gratuities, transfers where indicated, meals where indicated, most tours. All prices are per person, based on double occupancy, and subject to change. Airfare, transfers other than noted, and insurance are additional. Airfare is estimated at an additional \$1,600. Prices reflect a \$150pp cash or check discount.*

\$800 pp deposit due at booking. 40% due Nov. 25, 2017. Balance due Jan. 25, 2018.

To Book Call Cruise Holidays & Comfort Tours • 816-741-7417 • recep@chkc.travel



AMAWATERWAYS™
THE HIGHEST RATED RIVER CRUISE SHIPS



AmaStella

With a design inspired by classic ocean yachts, the new 158-passenger AmaKristina (2017), AmaStella (2016) and AmaViola (2016) offer a luxurious cruise experience on Europe's most legendary rivers.

These beautiful ships offer new innovative features including connecting staterooms and triples that accommodate multi-generational families and groups. Guests will also enjoy the comfort of AmaWaterways' signature twin balconies, hair styling and massage services, multiple dining venues, intimate wine rooms, fitness rooms and heated sun deck swimming pools with swim-up bars.

STATEROOM FEATURES:

- ◆ All outside accommodations, with revolutionary "twin balconies" on the Violin & Cello decks
- ◆ Deluxe hotel-style bedding with high-thread count linens, plush pillows and duvet cover
- ◆ Your choice of one large bed (larger than queen size) or two twin beds
- ◆ Cozy sitting area perfect for admiring scenic river views
- ◆ Spacious bathrooms with multi-jet shower heads
- ◆ Premium European toiletries, plus plush terry robes and slippers
- ◆ Large wardrobe, full-length mirror, hair dryer, safe and direct-dial telephone
- ◆ Flat-screen TV featuring local and satellite channels
- ◆ In-room entertainment on-demand system providing free Internet access, TV shows, movies and music
- ◆ Individually controlled air-conditioning
- ◆ Complimentary bottled water replenished daily

SUITE FEATURES:

- ◆ Extra spacious Suites (350 sq.ft.) with revolutionary "twin balconies" and mini-bar
- ◆ Roomy sitting area with a sofa and two chairs
- ◆ Marble-appointed bathroom with a bathtub and separate shower

SHIP FEATURES:

- ◆ Panoramic Lounge with bar; piano and dance floor; and Observation Lounge
- ◆ Complimentary specialty tea & coffee station available 24/7
- ◆ Elevator reaches the Restaurant, Lobby/Main Lounge and staterooms on Violin & Cello Decks (The AmaKristina also reaches the Piano Deck)
- ◆ Beauty salon, massage and spa services
- ◆ Walking track, heated pool and fitness room
- ◆ Bicycles for exploring on one's own or on guided bicycle tours

RESTAURANT FEATURES:

- ◆ Main Dining Restaurant - offering regional specialties using locally sourced ingredients
- ◆ The Chef's Table - a specialty restaurant, which serves as an intimate dining alternative to the main restaurant. It features a view of the chef as he prepares an array of delicious dishes for your gastronomic pleasure
- ◆ Complimentary unlimited fine wine, beer, soft drinks and specialty coffees with every lunch & dinner, plus sparkling wine at breakfast

REGISTRATION FORM - 2018 AMA STELLA

NAME AS THEY ARE ON PASSPORTS

NICKNAME

DATE OF BIRTH (MM/DD/YY)

1. _____
2. _____

GROUP AIRFARE WILL BE QUOTED IN OCTOBER

TRAVEL INSURANCE * Y/N _____ *Travel Insurance is additional and recommended

MAILING ADDRESS - Your travel documents will be sent here

Street _____
City _____ State _____ Zip _____
Home Phone [_____] _____ Business Phone [_____] _____
Cell Phone _____ Email Address _____

VACATION OPTIONS

• 2 NIGHT PRE-CRUISE PACKAGE (from \$1,399pp) _____

• RHINE RIVER CRUISE: Cat. D _____ Cat. C _____ Cat. BB _____ Cat. BA _____ Cat. AA _____

*Single occupancy, and additional package options available, call for details.

PAYMENT OPTIONS

CASH/CHECK YES _____ NO _____

CREDIT CARD MC _____ VISA _____ DISCOVER _____ AMEX _____

Credit card payments can be used for airfare and travel insurance if preferred. Pricing reflects a discount for cash and check payments on cruise option.

Please call Cruise Holidays when choosing the credit card option, \$150 will be added to you balance.

SPECIAL OCCASIONS AND SPECIAL NEEDS:

Birthday (mm/dd) _____ Name _____ Anniversary? (mm/dd) _____
Special Medical or Dietary Needs _____

OPTIONS FOR RETURNING THIS FORM:

Scan and email this form to recep@chkc.travel

Fax this form to 816-741-7123

Call Cruise Holidays and Comfort Tours : 816-741-7417 800-869-6806

**Pricing is subject to change

